

Bach's Cello Suites arranged for Viola



Bärenreiter

JOHANN SEBASTIAN BACH

Six Suites for Violoncello solo BWV 1007-1012

arranged for **Viola solo**

by Chung Park

BA05272

ISMN 9790006568895

Bach's Six Suites for Violoncello solo are among the highlights of eighteenth-century solo string literature. From early on, these pieces have also been performed on the viola – a practice that still enjoys unbroken popularity today.

The source situation regarding the cello suites is complex: Bach's autographs are lost and the surviving sources often contradict each other with regard to phrasing, bowing and other musical details.

While most existing viola transcriptions rely on the manuscript copy by Anna Magdalena Bach, this new arrangement by Chung Park more closely follows the manuscript prepared by Johann Nikolaus Schober as well as the anonymous manuscript believed to be commissioned by Johann Traeg because these sources might reflect later thoughts and elaborations on the Suites by the composer.



NEW!

Chung Park based his arrangement on a thorough study of Bärenreiter's Urtext editions of Bach's Cello Suites and recommends violists to refer to these editions and facsimile resources (BA05217 edited by Douglas Woodfull-Harris and Bettina Schwemer; BA05278 edited by Andrew Talle) for further information on the evaluation of the sources and the comparison of differing readings.



THE ARRANGER

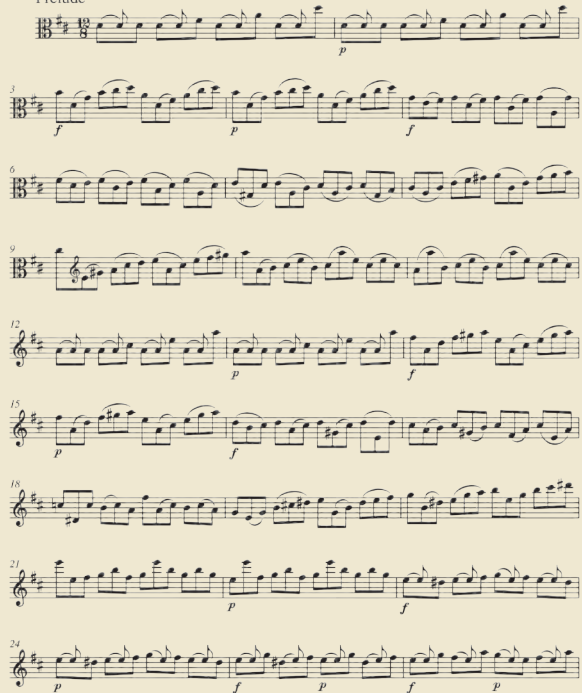
Chung Park is a conductor, violist, and educator who received his professional training at the Peabody Conservatory as well as the University of Miami. He studied viola in Hannover, Germany, with Hatto Beyerle of the Alban Berg Quartet. An experienced performer and educator, Chung Park has taught at several universities, among which the University of Central Florida, Appalachian State University and the University of Chicago, and has delivered masterclasses across the United States. In 2022 he was appointed conductor of St. Olaf Orchestra, St. Olaf College, Minnesota.

www.chungpark.com

Suite VI BWV 1012

Originalstimmung / Original tuning

Prelude



Suite VI BWV 1012

Transponierte Fassung / Transposed version

Prelude



- **Reliable transcription** in a fine performing edition
- An arrangement for viola based on a **thorough study of the sources** to Bach's Cello Suites
- In a **spacious, modern engraving** (24.3 cm × 31 cm) with **practical page turns**

STANDARD REPERTOIRE FOR VIOLA IN BÄRENREITER EDITIONS



Johann Sebastian Bach
Three Sonatas for Viola
(Viola da gamba) and
Harpsichord BWV 1027–1029

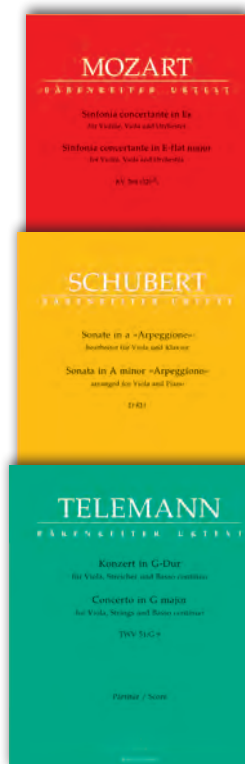
BA05186

Johannes Brahms
Sonatas in F minor and
E-flat major for Viola and
Piano op. 120

BA10907

César Franck
Sonata
arranged for Piano and Viola

BA10918



Wolfgang Amadeus Mozart
Sinfonia concertante for
Violin, Viola and Orchestra in
E-flat major K. 364 (320d)

BA04900-90 Piano reduction

Franz Schubert
Sonata in A minor D 821
„Arpeggione“
arranged for Viola and Piano

BA05683

Georg Philipp Telemann
Concerto for Viola, Strings and Basso
continuo in G major TWV 51:G9

BA05878-90 Piano reduction

